

HATFIELD HEATH Village Magazine

April 2024



**YOUR
COMMUNITY
MAGAZINE
NEEDS
YOU!**

Can you take on one of these volunteer roles and save our Village Magazine?

**Editor
Advertising Manager
Treasurer
Secretary**

See page 2 for more details

**Your FREE monthly magazine - created and distributed
by volunteers and paid for by advertisements**

Est 1893 www.hatfieldheathvillagemagazine.weebly.com

Welcome to your April 2024 issue of the Hatfield Heath Village Magazine.



April comes from the Latin Aprilis. The meaning is not clear; some historians believe that it comes from the Latin words aperire (to open) or apricus (sunny) because April is seen as the month of Sun and growth in the Northern Hemisphere.

Notable dates for April 2024 include Easter Monday on 1st April, St George's Day on 23rd April and National Pet Month.

Is 2024 your year to volunteer?

Can you take on one of these volunteer roles and save our Village Magazine from folding?

We have recognised that the existing editor role needed to be trimmed down and separated from creating pages for the advertisements. We also have a couple of additional posts that need filling due to retirement.

The roles we urgently seek to fill are:

Editor- preparing half of the magazine for publication with local information and news. Promoting up and coming events.

Advertising Manager – liaising with current and new advertisers and submitting invoices. Many of the advertisers are regular clients.

Treasurer - monitoring invoices and payments. Liaising with the Advertising Manager on payments received and those outstanding.

Secretary - organising meetings, liaising with the rest of the committee.

This could be a great opportunity to develop skills and experience to enhance your CV!

To find out more, please contact me by email on hatfieldheathmag@yahoo.co.uk or call me on 07505 506716.

Dawn Cox

INDEX:

Front Page:	A snapshot of previous issues with images supplied by Mark and Karen Homer
Pages 2 - 5:	Local contacts for clubs, groups and organisations including upcoming dates for your diary
Pages 6 -11:	Regular features and local news
Pages 12-14:	Official notices and minutes from HHPC
Pages 15-27:	Advertisements
Back Page:	Local photographs

ADVERTISING:

We offer 4 sizes and duration options.

A = 1/3 page (18.4 x 8.6cm) £20 pm/ £200 for 12 months

B = ¼ page (13.5 x 9 cm) £15 pm/ £150 for 12 months

C = 1/8 page (6.5 x 9cm) £8 pm/ £80 for 12 months

D = 1/12 page (4 x 9cm) £4.50 pm/ £45 for 12 months

Email: hmagaccounts@yahoo.co.uk
Call: 01279 730756

Payment must be made by 14th of prior month

EDITORIAL CONTENT:

Please send to the editor using the email address hatfieldheathmag@yahoo.co.uk by the 14th of the month, for the following month's issue.

CONTACT DETAILS:

Editor - Dawn Cox hatfieldheathmag@yahoo.co.uk	07505 506716
Treasurer and Advertising Manager - Norman Groves hmagaccounts@yahoo.co.uk	01279 730756
Secretary - Jean Clarke hmagsecretary@btinternet.com	01279 730667
Distributor - Michael Hockley	07976 801 062
Chairman - Brendan Carrig	01279 730 549
Printed by Panther Print	020 8592 1166

WEBSITE:

You can access the magazine and previous copies at:
www.hatfieldheathvillagemagazine.weebly.com

PLEASE NOTE:

The Hatfield Heath Magazine is a non profit organisation and everyone involved in its production and distribution works on a voluntary basis.

DISCLAIMER:

The Editor and Printers do not take responsibility for the information given or views expressed in the Hatfield Heath Village Magazine. Nor is any culpability accepted in work carried out by any of the advertisers.

Children's Clubs

- School Football Club - 812586
- Junior Cricket - Mark Welby 07717 204828 Tues 17:45 Cricket Pitch
- Hatfield Heath Scouts:-phill@goodskillstraining.co.uk
- Cubs - Chris Hancock: 731646
- Brownies - in Sheering 734391
- Beavers, Cubs, Scouts, Guides - Little Hallingbury Sally Bentley 658347
- Junior Karate - 01992 575679 Village Hall - Tel 07803 273 083

Sport & Fitness Groups

- Cricket Club - Mark Graves 07999416424 info@hatfieldheathcc.co.uk
- Football Club - 730212www.facebook.com hatfieldfc
- Keep Fit for over 50s Wed 9:45-10:30 V.Hall - Georgie 07940 735773
- Bootcamp - Vill Hall, Mon & Fri Men & Women all ages, shapes & sizes 07775 663 742 Wed 9:15 Institute
- Bowls - Village Hall - Stan Fish 653715 Evening sessions- Jack Sykes Jacksykes11@hotmail.co.uk
- Boxercise Tues 9:30-10:30am & 7-8pm + Crunch & Punch Thursdays 7-8pm Tel 07766 963956
- Seated Exercise -11 - 12pm on Fridays in the Village Hall Debbie Mousdale 07904 198309
- Weekly 6 mile+ Walk in Lt Hallingbury Mon 10:00 Meet at L.H Village car park 899451
- Bounce -Village Hall Tues 17:30 Sun 09:00. Alex: 07926 564327
- Pilates - Monday Institute 9.30-10.30 Donna Leutchford tel: 07739 012076
- Yoga - Mondays in Institute 7:30-8:30 Jodie Parker jodieparker01@gmail.com
- Zumba Gold-Thurs10:00-11:00 VillageHall -Petra Bonich 07884 336614
- Air Training Corps www.aircadets.org Sawbridgeworth 01279 723517

PARISH COUNCIL CONTACTS

Email: parishclerk@hatfieldheath.com
Website: https://hatfieldheath.com

Parish Clerk:	Richard Bowran	
Chairman:	Mark Bissell	07966 154401
Vice Chairman	Niki Champion	731104
		07967 322053
District Cllr	Mark Lemon	730581
Councillor	Sandra Saban	730042
Councillor	Nigel Robley	730568
Councillor	Chris Overton	731036
Councillor	Peter Brown	730859
Councillor	Hilary Allen	731049
Councillor	Sam King	730241/
		07984 401170

Next Parish Council meeting:

7:30pm on Wednesday 3rd April 2024 at the URC Hall

Next Forum:

10-12pm on Saturday 13th April 2024 n the Institute

KEY CONTACTS

POLICE:

PCSO Steve Sharma email: 72023@essexpolice.uk
Essex Police non-emergency 101
Emergency 999

HEALTH & WELLBEING:

EdenSurgeries - Broomfields 01279 730616
Eden Surgeries - Broad Oak 01279 718245
<https://www.edensurgeries.co.uk>

Central Surgery - Sawbridgeworth 01279 603180

Out of hours NHS 111

The Samaritans 116 123
jo@samaritans.org

West Essex Night Owls
a text, email and telephone service for emotional support 5pm - 11pm 7 days a week. <https://www.mindinwestessex.org.uk/services/crisis-support/west-essex-night-owls-support-line/>

Frontline for local health & wellbeing services
www.uttlesfordfrontline.org.uk

SCHOOLS:

Hatfield Heath CP School 01279 730382
www.hatfieldheath.essex.sch.uk

Pre-School (2-5 years) 07340 575792

Groups, clubs & institutions

- Bridge Club Tues 2-5pm & Weds 7:30pm-10:30pm Village Hall 723948 Adrienne Tinn <http://bridgewebs.com/hatfieldheath>
- Luncheon Club for senior citizens 730581
- Open Coffee Morning at the Institute 730288
- Gardening Club 730425
- Hatfield Regis History Society - FrancesSmith 718410 Hatfieldregislocalhistorysociety.weebly.com
- Royal British Legion 730042
- Bell Ringers 730526
- Holy Trinity Choir 730288
- Leisure Hour 01279 731319
- Little Hallingbury Games Club - 1st Thursday of the month in Lt H Vill Hall. £2 inc tea/coffee & biscuit. 1:30 - 3:30pm chriscarey4813@gmail.com or 07449523487
- W.I in Broad Oak - Sue Brown 718620 www.facebook.com/HBOWI.hatfieldbroadoakWI@gmail.com
- Talking Newspapers 651270 or 653925
- Hatfeld Heath Men's Shed - Mike 07968 066015 Simon 07966 382839 hatfieldheathmensshed@gmail.com
- HeathPlayers - MarkRatcliff 503174 www.heathplayers.org, heathplayers@yahoo.co.uk <https://www.facebook.com/groups/246923642002583>
- Italian Language - Michelina 07786 341754
- Spanish Language - Ann Whale 731288
- Farmers' Market 07956 563710
- Visiting Optician 443181
- Neighbourhood Watch - Hilary Allen hils.allen@outlook.com
- Uttlesford Badger Group - Derek Barry on call 24/7 503332 or 07941 185171
- Footpath Warden: footpathwarden@hatfieldheath.com

HOLY TRINITY CHURCH



Holy Trinity Church is open during daylight hours. You are very welcome to visit for prayer, quiet time or simply to have a look around.

April Services

14 April at 10.30 am – Matins
21 April at 6.30 pm – Evensong (Annual Parochial Church Meeting beforehand at 4.30 pm)
28 April at 10.30 am – Holy Communion

Contacts

Rev Dawn Jewson, via the Six Villages Administrator
07934 260978
administrator@thesixvillages.org
Tues, Weds & Thurs between 10am to 1pm –

Messages are checked daily.

Churchwarden Diana Graves – 07754 613400
Church Choir diana_graves@hotmail.com
Bell Ringers hatfield-heath@eacr.org.uk

UNITED REFORMED CHURCH



URC Diary April 2024

Wednesday April 3rd Leisure Hour Church Hall 2.00 pm
Sunday 7th April United Service Jo Hargreaves 10.30 am
Sunday 14th April Family Service Rev Kirkby (Communion) 10.30 am
Sunday 21st April Family Service William Glasse 10.30 am
Sunday 28th Family Service Elizabeth Stockdale 10.30 am
Light refreshments available after the service. All are welcome.

Contacts:

URC Rev Blair Kirkby	07913 476934
URC HH Administrator Jacqueline Jackson jacqjack64@gmail.com	07341 299245



VILLAGE FACEBOOK GROUP

Created for residents/ former residents of Hatfield Heath to share information and events within the community.
Search: Hatfield Heath The Village Group! - www.facebook.com/groups



MOBILE POST OFFICE

<https://www.royalmail.com/services-near-you/post-office/hatfield-heath-stop-cm22-7ea>

Every Friday from 10am - 11am - Village Hall Car Park. CM22 7EA.

Services: Mail - Parcelforce Express Services - Travel - Foreign Currency - Travel Money Card

LIBRARY VAN

<https://libraries.essex.gov.uk/digital-content/our-mobile-and-home-library-services/mobile-libraries/uttlesford>

Visits every 3 weeks & parks in Wagon Mead, off Broomfields 12pm - 12:30pm

Next visits: 17th April, 8th & 29th May 2024



CRAFTS, FRIENDSHIP,
COFFEE AND CAKE

IN THE VILLAGE HALL

WELCOME SPACE

HATFIELD HEATH VILLAGE
HALL TRUST

EVERY MONDAY 12 till
3.00pm

Telephone 07891 860553 for
information

HATFIELD HEATH

VILLAGE HALL & INSTITUTE

ARE AVAILABLE FOR HIRE

FOR ALL OF YOUR CELEBRATIONS,
GROUP INTEREST ACTIVITY CLASSES &
SPECIAL EVENTS

HATFIELD HEATH VILLAGE HALL TRUST CIO ARE
VOLUNTEERS WORKING ON YOUR BEHALF TO
PROVIDE FACILITIES FOR HATFIELD HEATH
RESIDENTS, ORGANISATIONS AND BUSINESSES
WE ENCOURAGE YOUR INVOLVEMENT

**FOR BOOKING DETAILS
TELEPHONE**

01279 730544

HATFIELD HEATH VILLAGE HALL TRUST
REGISTERED CHARITY No 1198523

FOR OTHER INFORMATION CONTACT
secretaryhhvht@outlook.com

Bereavement CAFE

Meet and connect with others who understand

- A safe space if you have experienced loss
- Chat, share and support each other
- Facilitated by trained volunteers
- Everyone is welcome and it's free to attend

Where? United Reform Church
Chelmsford road, Hatfield Heath
CM22 7BH

When? Second Wednesday of the month

Time? 11am - 12.30pm

For more information, please get in touch by calling
GriefLine on 01279 945089

stclarehospice.org.uk
Registered Charity No. 1069631



HIRE UR CHURCH HALL FOR BIRTHDAY PARTIES

You can hire the hall for children's parties

£10.50 / hour Tel :01279 730 581

Grove
Cottage
the home of 50 days of local service

BALL

RADISSON BLU, STANSTED
SATURDAY 11TH MAY 2024

TICKETS £75 INCLUDE A THREE-COURSE MEAL,
CASINO AND LIVE BAND. BLACK TIE.

Gardening Club

Our February meeting was time for new subscriptions and we were pleased to have so many people renew as well as new members who we welcomed.

The speaker was Nick Dobson whose talk was entitled, "A funny thing happened on the way to the potting shed." As the title suggested, the content was humorous, with anecdotes sprinkled between the slides. We were introduced to photos of unusual plants with unusual names, oddly shaped vegetables and even a type of orchid with a monkey-like face. Nick's own expertise is in fuchsias and he has been a judge at gardening shows. His other passion is dahlias and he showed us some photos of his own colourful garden. Along with the humour there were useful tips and facts for us to consider.

Our next meetings are at 2pm at the URC Hall, Chelmsford Rd. Members and Visitors welcome.

Wednesday March 27th – Liz Livermore -
"The Burren – an area of Western Ireland which has a wide range of plants."
Wednesday April 27th – Brian Carline -
"Fuchsias and Pelargoniums."

Mary Stewart

NEWS FROM THE GARDENS OF EASTON LODGE

News for April 2024

April is the start of the main season at the Gardens – we open weekly on Thursdays, starting on 4 April, and our first main season Open Day is on 21 April.

Through March we hope the weather will have allowed us to get planting. A range of new trees for the Glade, including *Cercidiphyllum* (Katsura) and Acers, will have been OK with going into wet soil, but elsewhere we hope the ground will have dried out so that grass returns to the mud patches created by the standing water in February. Our volunteers will have worked to extend the Japanese garden, and planted more shrubs and small conifers into the new Warwick border (behind the croquet lawn). In the kitchen garden much of the early sowings of peas and beans will have been in pots, so by April we can transfer plants and hopefully avoid them being eaten by all the wildlife in the garden – the mice, slugs, moles and pigeons to name a few!

The joys of April should be the spring flowers and blossom. After working to clear some woodland, we hope the bluebells will be able to come through more strongly and there may be the tail end of the daffodils, cowslips and violets. In the Italian garden the tulips should be providing bright colours to the fresh greens of spring growth. In the kitchen garden there will be a succession of blossom. The first blossom is the nectarines and peaches in March, followed by plum and cherries. By April it should be pears and apples. In the Glade there will be blossom on the flowering cherries and hawthorn.

The Gardens are open from 11.00 to 3.00 on Thursdays, with payment on the Gate. Our volunteers provide hot and cold drinks and homemade cakes. For the Open Day on 21 April, 11.00–5.00 there will be folk and acoustic music from Karen and Tony, children's craft and trail and the usual fayre for a Sunday: hot bacon rolls, cheese or hummus rolls, homemade soup and cakes. For more information go to www.eastonlodge.co.uk/whats-on

Jill Goldsmith



QUIZ NIGHT

IN SUPPORT OF STTA

Come join us for our quiz & raise

- hot food included
- BYO glasses, drinks and nibbles
- teams of max. 8 per table
- tickets only £15 each

Saturday 13th APRIL

7:30pm prompt



Sawbridgeworth Memorial Hall

Tickets must be purchased by 5th April using the QR code or from:

<https://stta.sumupstore.com/>

or contact tim@timjane.co.uk (07729 384 390) by the 3rd April for other methods of purchasing.

www.sawbridgeworthtownwinning.co.uk

Stort Valley Nature Group



Stort Valley Nature Group

110 likes · 142 followers



Liked Message Search

Wednesday 17th April. 10 a.m. Nature Walk. Wall Wood, Woodside Green. TL 521184. W3W.rival.pepper.codes

Friday 26th April. AGM 8 p.m. Hatfield Forest Meetings Room followed by short Nature Reporter.

Friday 19th April 8 p.m. Pollination, Bees and Beyond. A presentation by Rory Dimond. On Zoom.

More details www.stortvalleynaturegroup.net or search for us on Facebook

50 years of McDonald's in the UK

McDonald's is undoubtedly one of the most recognisable fast-food restaurants in the world. This year marks 50 years since the UK's first McDonald's opened its doors. It was located in Woolwich in South East London. You have to go a little further back for the first McDonald's in the world though. This was opened in 1940 by brothers Maurice and Richard McDonald, and was situated in San Bernardino in California.

by Amar



HATFIELD REGIS LOCAL HISTORY SOCIETY

The Hatfield Regis Local History Society are pleased to announce that their latest publication 'Then and Now' is available for purchase. This book, size A5 Landscape, is a journey comprising 88 pages + 4 page cover of photographs of a historical past to the present that forms part of Hatfield Heath's historical heritage.

For further information please contact david.parish@yahoo.co.uk or anne.parish1@yahoo.co.uk.

Price: £8



THEN



NOW

Need Advice?

Talk to our friendly adviser at

Hatfield Heath Village Hall

Monday 8th April

1.00 - 3.00 pm

Call or email for an appointment

- Debt and money
- Benefits & financial help
- Disability & carers support
- Family & relationships
- Housing
- Work
- Utility Bills
- Law & courts

citizens
advice

01799 618840

help@uttlesfordca.org.uk

www.uttlesfordca.org.uk

Hatfield Heath PCC are grateful to have already received £1,026 from the Co-op Local Community Fund. We are building a fund to install some basic facilities ie accessible toilet and kitchen in Holy Trinity Church so we can offer fellowship to the local community. The scheme will continue to run until 19-10-2024. If you shop at the village Co-op store, do ask about getting a card and choose our cause. It costs you nothing and you will get some special deals on your shopping.

If you already have a Co-op loyalty card, please nominate Hatfield Heath PCC as your local cause. This QR code will take you straight to our page. Thanks so much.

Diana Graves, Church Warden



LEISURE HOUR

It was great to see so many people turn up at the March meeting, a total of 39 of which 4 were male members.

Tim Turner, the retired auctioneer at Sworders, gave an interesting talk about Fakes and forgeries over the last three centuries.

He has a vast knowledge about auctioned art works, especially about paintings from old Dutch masters who were so popular mainly by Americans, that it became worthwhile making fakes.

Tim told us about devious ways to sell forged paintings and sculptures in well-established auction rooms, He recounted many stories beginning with "There was this man in an old overcoat held together by string clinging a brown parcel under his arm with the story he found it in his attic or inherited it from his father" The parcels contained art works that were initially recognized as originals by various art specialists. These were sold for a fortune, as the stories behind them made sense as the man in the coat had done his research very well, but later proven to be a fake.

He also told us about the famous Dutch forger Han van Meekeren who sold a painting by Vermeer to Göring. He was charged with forging the painting but was later acquitted in court because he could demonstrate he was able to paint in the style of the old master.

The famous English forger Tom Keating who could copy many different styles ended up being so popular that people paid a lot of money to own his artwork in the style of a famous artist.

Forgeries were also made by melting pieces of silver of lesser quality and then adding a real Hallmark stamp from another piece of silverwork.

Thank you Tim for an enjoyable and informative talk.
Thanks to everyone who contributed prizes to our raffle, including the local Fish Inn.
There will be no raffle at the April meeting.

Our next meeting is on Wednesday 3rd April at 2pm in the URC Hall. Jody Huizar will tell us about his role as a Town crier and the Dunmow Flicht.

Membership for the rest of the year is £5 and visitors are welcome for £3.

Mieke Fordesman

INDIAN PROVERB

There is an Indian proverb that says that everyone is a HOUSE with FOUR ROOMS, a physical, a mental, an emotional and a spiritual. Most of us tend to live in one room most of the time but unless we go into EVERY room EVERY day, even if only to keep it aired, we are not a complete person.

By Rumer Godden

Sent in by Kim Butler

Gordon Darton, a long time resident of Hatfield Heath, has asked, through this magazine, to let you all know he is now following a period in hospital, very happily settled into a care home in Bishop's Stortford, and will not be returning to his bungalow in Broomfields.

He is being well looked after and joining in the many activities there. Many of you will know Gordon from his garden, it is full of gnomes, cartoon characters and even skeletons. Sadly these things can't be taken to the care home. Gordon has asked, if anybody would like to help themselves to a gnome or two, please help yourself, otherwise they will sadly end up in a skip.

John Jackson



Residents of the Parish of Hatfield Heath

**are invited to attend an
Annual General Meeting**

of the
Hatfield Heath Village Hall Trust

On the 25th April 2024
in the Committee Room

The Village Hall Hatfield Heath at 8pm

At the meeting you will discover what changes are being undertaken at the Hall to improve its facilities and we need to hear from YOU the Residents of Hatfield Heath what additional activities, clubs, interest groups you would like to see added if possible in the future.

For information contact the Trust Secretary
Hilary Allen on 01279 731049 or
email on hil.allen@outlook.com



QUIZ FOR SALE

In aid of Teenage Cancer Trust

The quiz is About Time – just think of phrases, song titles, books, famous people, flowers etc that contains a time-related word:

Period Drama? **Twelve Years a Slave?** **Forever Amber?**
Thursday Island? **Open All Hours?**
Frankie Valli and the Four Seasons?

Quizzes in aid of Teenage Cancer Trust are on sale for £2 each from

- Jane Johnson, Gable End, 5 Sayes Gardens, Sawbridgeworth, Herts CM21 9BL (07808-684357). Please send an SAE and cheque payable to Jane Johnson.
- Pay via my fundraising page <https://www.justgiving.com/fundraising/tctquizji> and then email jane@timnjane.co.uk to say you have paid
- Nisa in Bell Street, Sawbridgeworth (no contactless payments - cash or cheques payable to Jane Johnson only)

Closing date for quiz is 24th May 2024

The Training Ship 'Cornwall' at Purfleet.

Whilst reading the story of Gladwyns residents for last month's magazine article, a list of donations to Essex charities by Loftus Arkwright in 1864 caught my eye and in particular a £10 donation to 'School Ship "Cornwall" at Purfleet'. It was bracketed between Essex Reformatory School and Essex Society for Discharged Female Prisoners so I assumed it might be related to Magistrates options for sentencing. An article in the Local Historian in April 2023 by Andrew Emeny gave the history.

The reformatory school's movement developed in Victorian times to try and separate children from the horrors of adult prison life and potential life of crime. The Liverpool based school ship 'Akbar' proved to be successful in this aspect and so a similar ship was proposed for the Thames by the Reformatory Union. The Admiralty agreed to lend a wooden walled ship HMS Cornwall for this purpose providing all costs to convert for use and maintaining were met by the Society. The gun decks were converted into school rooms and sleeping for 200 hammocks created and the ship opened for business on 6 June 1859 under Commander Burton and a staff of ex-Navy men. The intent was to break the young offenders contact with crime and train the boys for Royal Navy or Merchant Navy life to be honest citizens. To this end schooling in reading, writing and arithmetic was matched with practical skills in navigation, sailing and related trades such as sail making and carpentry. In 1869 a larger ship was required and HMS Wellesley was provided (built in 1815). She was renamed as TS Cornwall for practical reasons and the original Cornwall was renamed as Wellesley and sent up to the Tyne to continue as a training ship.

By tracing names in censuses and court proceedings, Andrew Emney calculate that the ships reoffending rate was typically 9% in the 1890's. This was higher than the land based reformatories with 5% (partly due to the more free spirited boys being sent to the ship) but better than many current facilities. The initial intakes were from the poorer London and Middlesex boroughs but by the end of the century they were coming from all over England. This helped to ensure original crime ties were broken and whereas in the 1860's 38% of leavers returned home by 1900 this had fallen to 8%, so can be considered successful results. The analysis also indicates that returning boys found better jobs than their fathers, who typically would have been in low paid labouring work. Over the study period 35% of boys took up a maritime career and another 36% gained jobs due to the vocational training. Only a few boys gained entry into the Royal Navy directly, due to naval policies of generally not accepting anyone with a prison record, but a transfer from the Merchant Navy after 6 months 'very good service' was allowed.

In 1928 the ship was moved across the river to Denton, near Gravesend but her work was closed down in 1939 due to wartime constraints, with the ship herself being sunk in an air attack in 1940 but her ships figurehead survives at Chatham Dockyard. In its 80 years of service, the ship received over 7000 boys.

(CONTINUED ON PAGE 11)

**HATFIELD HEATH FESTIVAL
 CLASSIC CAR SHOW
 SPONSORED BY J.E. WHITE MOTORS LTD
 SUNDAY 23RD JUNE 2024**

BOOKING FORM

NAME _____
 ADDRESS _____
 POSTCODE _____ TEL. NO. _____
 EMAIL ADDRESS _____
 DETAILS OF CAR.
 MAKE _____ MODEL _____ REG. NO. _____
 ORIGINAL REG. DATE _____
 ANY INTERESTING HISTORY _____

- CATEGORY A VETERAN AND VINTAGE CARS UP TO 1930
- CATEGORY B POST VINTAGE CARS 1931-1945 INC.
- CATEGORY C POST WAR CARS 1946-1959 INC.
- CATEGORY D CLASSIC CARS 1960-1975 INC.
- CATEGORY E MODERN CLASSIC CARS 1976-2009 INC.
- CATEGORY F MILITARY / COMMERCIAL VEHICLES ANY YEAR
- CATEGORY G BEST CLUB STAND

FOR EACH CATEGORY, A TROPHY WILL BE AWARDED TO THE VEHICLE, WHICH IN THE OPINION OF THE JUDGE, IS THE BEST IN THAT CATEGORY. ALL ENTRANTS ARE REMINDED THAT THE JUDGES DECISION IS FINAL. ALL ENTRANTS WILL RECEIVE A PLAQUE. PLEASE ENTER MY CAR IN CATEGORY _____

I UNDERSTAND THAT THE HATFIELD HEATH FESTIVAL COMMITTEE WILL NOT ACCEPT ANY RESPONSIBILITY FOR ANY DAMAGE OR ACCIDENT RESULTING FROM THE PARTICIPATION OF MY PASSENGERS, MYSELF, OR MY CAR IN THE EVENT.
 SIGNED _____ DATE _____

PLEASE SEND THIS FORM BEFORE 16TH JUNE 2024 TO ENSURE INCLUSION IN THE EVENT TO SARAH WHITE, WENDYCOT, CHELMSFORD ROAD, HATFIELD HEATH, BISHOPS STORTFORD, HERTS. CM22 7BH. INCLUDING AN S.A.E. IF POSSIBLE. TEL. NO. 01279 730274 OR 07796772049.



Brahms
 Academic Festival Overture

Maconchy
 Concertino for Bassoon

Tchaikovsky
 Symphony No. 4

Conductor - Rebecca Miller
 Soloist - Amy Harman

Sunday 21st April 2024, 4:00pm
 At Memorial Hall, Bishop's Stortford College
 Maze Green Rd, Bishop's Stortford, CM23 2PQ

Tickets: £18 Adults
 £5 Students
 Children under 18 free

Tickets available on the door or in advance at www.bishopstortfordsinfonia.com
 Early bird booking discount available

Check out our website, or follow us on social media for more details:



Registered charity no. 1093196

THE HUNDRED PARISHES SOCIETY

www.hundredparishes.org.uk



The Society's logo is a wood-cut by the late Eric Ravilious.

Eric Ravilious and Edward Bawden were both Royal College of Art students when, on a cycling holiday, they happened upon Great Bardfield in Essex. There, they rented Brick House, starting a fascinating period for the village. Over the next two decades, numerous artists came to live there; they became known as The Bardfield Artists.

In 1932 Bawden married fellow student Charlotte Epton, a potter, and his father bought Brick House as a wedding present for them. In the same year Ravilious married Tirzah Garwood, an artist and engraver, and they lodged for a while with the Bawdens at Brick House.

Bawden's work can be seen today on three Victoria Line stations - Victoria, Tottenham Hale and Highbury & Islington - for which he designed the logos.

Another artist, John Aldridge, bought Place House in Great Bardfield in 1933 and soon became friends with Bawden. They produced Bardfield Wallpaper together for the company Cole & Sons to distribute.

In 1952, painter Stanley Clifford-Smith moved into Bucks House and later to the Old Bakehouse. He was very involved in Open House exhibitions that were held in the 1950s when the public could view and buy art in the studios and homes where it had been created.

Marianne Straub, a textile designer, moved to Great Bardfield in 1953, buying Trinity Cottage. She was the senior designer for Warner & Sons of Braintree.

Other Bardfield Artists included Kenneth Rowntree, Michael Rothenstein and Walter Hoyle.

A good selection of the Bardfield Artists' work can be seen at Fry Art Gallery in Saffron Walden – it reopens on April 7th – see <https://fryartgallery.org/> for opening hours. In Great Bardfield, books and other information about the artists can be purchased at the new premises of Between The Lines bookshop.

Ken McDonald, Secretary

Photos

Top right: Brick House, Great Bardfield

2nd from top, right: Blue plaque on Brick House, Great Bardfield

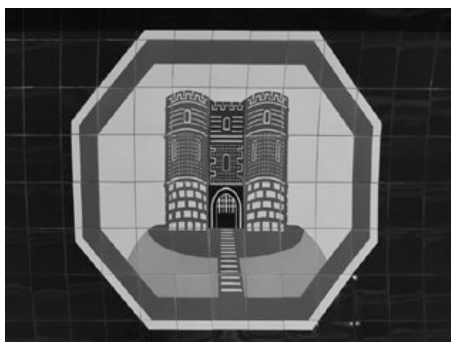
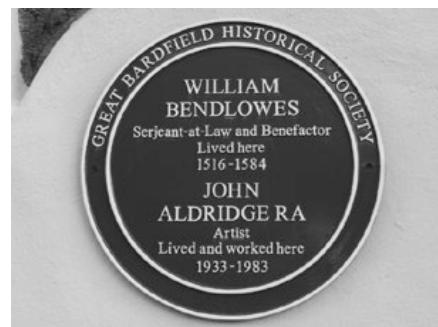
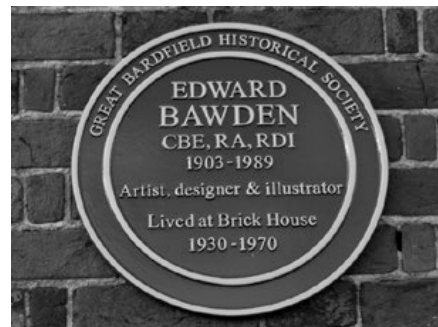
3rd from top, right: Place House, Great Bardfield

4th from top, right: Blue plaque on Place House, Great Bardfield

5th from top, right: Edward Bawden's logo at Tottenham Hale Station

Below right: Edward Bawden's logo at Highbury & Islington Station

Below left: The Hundred Parishes logo by Eric Ravilious.



Maria raises vital funds on the Camino trail pilgrimage

In October, Maria and her friend Trish set off on an inspiring journey along the Camino trail pilgrimage, fulfilling a lifelong dream while raising £3,000 for the Royal Free Charity. Covering 290 kilometres from Porto in Portugal to Santiago in Spain, Maria and Trish walked an average of 20-25 kilometres each day over two challenging but rewarding weeks.

Maria's efforts gained support from family, friends and strangers, with her grandchildren proudly sponsoring one month of their pocket money towards her fundraising target.

The pair faced many challenges, from cobbled streets and steep rolling hills, heavy rain, wind and torn rain ponchos. The weather, described as the worst in years, failed to dampen their spirits.

Maria said: "I decided to fundraise for the Royal Free Charity to show gratitude for the help and support my husband Jim and I received from medical teams at the Royal Free Hospital, after his diagnosis with liver cancer and subsequent liver transplant."

Other walkers felt a connection with Maria's journey, leading to unexpected friendships and donations. Becoming friends with people from different places made Maria's journey even more special.

Memorable moments included reading messages of encouragement left by fellow walkers, and seeing people help others who were struggling on the trail, which highlighted the kindness and solidarity among those taking part.

Their triumphant arrival in Santiago marked the end of their journey, but not before a gruelling 29-kilometer walk.

The completion of Maria's journey in Santiago was met with emotional reunions with family and friends and followed up with a cathedral service. Maria said, "The memories, photographs and extraordinary people will be cherished for a lifetime, I will never forget the kindness, and love I have encountered along the way.

"I had a brilliant time meeting extraordinary people experience such kindness and love from my family, old friends and new ones seeing beautiful countryside and having time for myself was a gift. Maybe I'll do it again."



Article and photographs sent in by Maria Ewering-Norris. (Original source: Royal Free Hospital Charity news letter).

Hatfield Regis Local History Society

(CONT'D FROM Pg 9)

In 1895 the captain of the ship, Arthur Morrell RN, summed up the success of Cornwall: 'The public ought to be glad that boys of such class, with antecedents of the worst kind, were rescued from homes of poverty and crime to be made worthy citizens and manly defenders'. So just as well that Loftus Arkwright and other Essex gentlemen supported this venture.

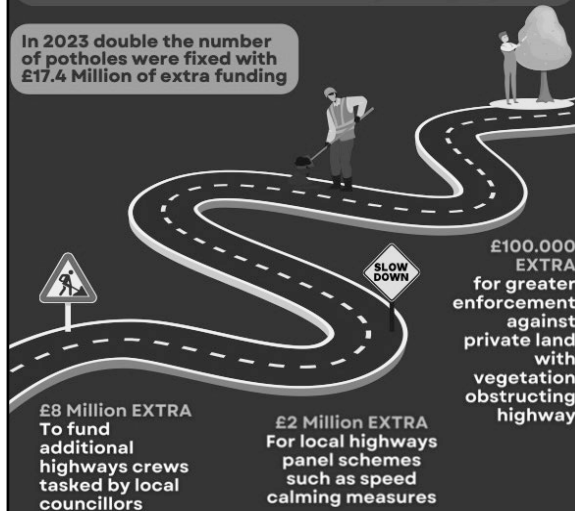
Our next meeting is on 16 April 2024 in Hatfield Heath URC Church Hall at 7.30pm when we have a return visit from Tim Turner (ex Sworders) for an Antiques Roadshow evening.

Quentin Spear

Essex Conservatives invest £12 MILLION EXTRA to fix our local Highways

In addition to the £122 Million yearly spend on continued maintenance and priority repairs

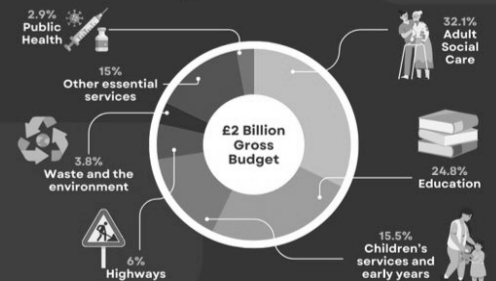
In 2023 double the number of potholes were fixed with £17.4 Million of extra funding



REPORT A HIGHWAYS DEFECT ONLINE BY SCANNING THE QR CODE



Essex County Council Budget 2024/25



Highways is the most visible work of the County Council. Essex Conservatives have listened to local people and ensured our roads and pavements have the much-needed investment they need with extra funding this year and last.

However, the County Council also provides many other vital services which are funded through the £2 billion budget including adult and children's social care, public health, education, libraries, youth services and infrastructure, as well as working to improve the environment and enhance the local economy.

Well over 50% of the budget is spent on adult and children's social care supporting the most vulnerable people across the county.

The above pie chart shows how the County Council Budget is broken down. Around 72% of your council tax goes to the County Council.

KEEPING IN TOUCH WITH ESSEX CONSERVATIVES

www.essexconservatives.uk
www.facebook.com/essexconservatives
www.instagram.com/essex_conservatives
www.twitter.com/ECCConservative



Powered by Tom Cunningham on behalf of Essex Conservatives of Thetford House, 4 Meadow Road, Loughton, 991 4th, Printed by Solpress, 1 Stock Rd, Southend-on-Sea S52 9DP.

Dear Hatfield Heath Residents,

Essex County Council has set its budget for 2024-2025, This year the main pressures are on increased numbers of children with additional needs, home to school transport costs, an increase of 5.1% staff pay and 9.8% national living wage increase.

The leaflet above gives you details of where we spend your money. If there are any local issues where I can help please contact me on 01245 231250.

Cllr.susan.barker@essex.gov.uk



HATFIELD HEATH PARISH COUNCIL
Minutes of the Meeting of the Parish Council
held at URC Hall, Hatfield Heath
at 19:30 on Wednesday 6th March 2024

Present:

Cllr N Champion (NC) Chair	Cllr N Robley (NR)	Cllr S Saban (SS)
Cllr M Lemon (ML)	Cllr H Allen (HA)	Cllr S King (SK)
Cllr P Brown (PB)	Cllr M Bissell (MB)	

In attendance: R Bowran – Parish Clerk

Welcome by the Chair.

23/205 APOLOGIES FOR ABSENCE

Received from Cllr Overton - unwell

23/206 DECLARATIONS OF PECUNIARY INTEREST

There were no Declarations of Pecuniary Interest by Members.

23/207 PUBLIC PARTICIPATION

To receive and respond to questions from members of the public on matters within the remit of the Parish Council

A member of the public highlighted verge damage on the verges and double yellow lines between the War Memorial and the Cricket Club. He volunteered to fill the worst area. This is caused by parking of commercial vehicles along that stretch.

Clerk to contact North Essex Parking Partnership to visit and ticket offending vehicles.

A member of the public revisited the antisocial parking issues in West Hayes. PCSO has conformed that parking on a dropped kerb is illegal.

Clerk to contact the Police and North Essex Parking Partnership to visit and ticket offending vehicles.

23/208 MINUTES OF MEETING

Resolved: To approve the minutes of the Meeting of the Parish Council held on 07 February 2024 (M10)

23/209 PLANNING COMMITTEE

To note the draft minutes of the Planning Committee held on 25 February 2024 (P15).

APPLICATIONS RECEIVED FROM THE LPA FOR CONSIDERATION

Application to vary section 106 agreement dated 21st June 2022 between Uttlesford District Council (1) and A J Wadhams and Co Ltd (2) pursuant to UTT/19/3173/FUL to add the two extra dwellings to secure the enabling works to the Listed Buildings

Lea Hall Dunmow Road Hatfield Heath CM22 7BL

Ref. No: UTT/24/0376/DOV | HHPC Comment: Objection. This is an enabling application which is an alternative approach to that made in the previous application UTT/23/1966/FUL.

Removal of existing pitched roof. Erection of first floor with new pitched roof with 4no. rear dormers. Single storey rear extension, two storey front extension. Insertion of new door to left and right flank elevations, alterations to existing fenestration, erection of new entrance porch and alterations to existing dormers to front and rear elevations above the garage.

The Willows Stortford Road Hatfield Heath Essex CM22 7DL

Ref. No: UTT/24/0330/HHF | HHPC Comment: Objection. The proposal is not in keeping with the street scene in particular the roof heights which are overbearing.

DECISIONS MADE BY THE LPA

Non material amendment to UTT/22/2610/FUL - Addition of a chimney to the new dwelling

Springhead Stortford Road Hatfield Heath Essex CM22 7DL

Ref. No: UTT/24/0133/NMA | Status: Approved

Detached outbuilding for home gym & hobby room, following approval UTT/21/3178/LB

Oak Tree Barn Sheering Road Hatfield Heath Essex CM22 7LL

Ref. No: UTT/24/0002/LB | Status: Withdrawn

Detached outbuilding for home gym & hobby room, further to approval UTT/21/3177/HHF

Oak Tree Barn Sheering Road Hatfield Heath Essex CM22 7LL

Ref. No: UTT/24/0001/HHF | Status: Withdrawn

Erection of new two storey side extension and replacement door with new entrance portico to existing property Laurels The Heath Hatfield Heath Essex CM22 7AB
Ref. No: UTT/23/3118/HHF | Status: Approved

Demolition of garage and erection of replacement garage. Erection of 2 no. detached dwellings, together with associated parking, residential curtilages, landscaping and creation of new vehicular access.
Serena Chelmsford Road Hatfield Heath Essex CM22 7BD
Ref. No: UTT/23/3040/FUL | Status: Refused

Application to discharge condition 3 (GCN Method Statement), condition 4 (CMP), condition 5 (Contamination), condition 6 (Biodiversity Enhancement Layout), condition 7 (Boundary Treatment) and condition 8 (External Finishes) of UTT/22/0893/FUL

Claremont Nursery Sheering Road Hatfield Heath CM22 7LJ
Ref. No: UTT/23/2089/DOC | Status: Discharge Conditions in Full

Proposed garage conversion to residential annexe
Mill House the Heath Hatfield Heath Essex CM22 7AB
Ref. No: UTT/23/1274/HHF | Status: Refused

ENFORCEMENT ISSUES

Responses received on alleged breaches at

- 25 Ardley Crescent; UTT/21/0980/HHF. No progress to date.
- Land to rear of High Pastures; UTT/21/0420/CLE. Further evidence is required in order to reopen the case. Reported issue at
- Home Pastures/Mill Lane; Essex Highways Ref: 2900479 Status: An inspector will carry out an initial assessment to determine the next appropriate action, which may include a site visit. This could take up to 56 days.

MAJOR APPLICATIONS

Consultation on S62A/2024/0032 - The demolition of 12 no. existing structures, the conversion and restoration of 8 no. existing buildings to form 8 no. holiday cottages and 1 no. dwelling, the construction of 3 no. single storey dwellings. The creation of a pedestrian and cycle link path

Land To the West of Mill Lane Hatfield Heath

Ref. No: UTT/24/0103/PINS | Received: Wed 17 Jan 2024 | Validated: Tue 20 Feb 2024 | Status: Awaiting decision

There is no further news on the Mill Lane application Camp Poultry Farm Mill Lane (Greenways) UTT/23/1688/FUL .

23/210 REPORTS FROM COUNTY AND DISTRICT COUNCILLORS

To receive and note reports from County and District Councillors.

- Cty Cllr Susan Barker (*in absentia*)
 - No written response yet received from Cllr Cunningham from the meeting of 23 February.
- Dist Cllr Mark Lemon
 - Bin collections are nearly back to normal
 - There is no concise reason for UDC losing their operator's licence. An FoI request has been lodged for discovery.
 - UDC are selling assets to balance theory budget
 - UDC declared a 2.99% increase in council tax
 - UDC declared a 7% increase in council property rents

23/211 FINANCIAL REPORT

1. Approval of Expenditure.

Noted: Items of expenditure in February 2024 as approved by the Finance committee

2. Management Accounts

Noted: Management accounts for the eleven months to February 2024

3. Interim Audit

Noted: That the Finance committee have received the Interim Internal Audit and noted their recommendations

23/212 TENDER FOR GRASS CUTTING

To receive a report on the tender process for the award of grass cutting contracts for 2024-26

To receive the recommendations of the Finance Committee held on 06 March and to award contracts. Which are:

- Main grass cutting contract be awarded to PW May
- Footpaths and minor works to Oakridge Nurseries
- Pond works to be respecified and retendered

Caveat on all works to include a 3-month quality check and prior notice of all visits.

Resolved: To accept the recommendations of the Finance Committee [*prop Cllr Saban; secd Cllr Robley; all in favour*]

23/213 CLERK'S REPORT & CORRESPONDENCE

Received and noted: The Clerk's report and correspondence received.

(CONTINUED ON PAGE 14)

PARISH COUNCIL MEETING MINUTES - (CONTINUED FROM PAGE 13)

23/214 KEY TASK MONITOR

The Key Task Monitor has been revised and simplified to create a better document.

- Report from Forum held on 17 February 2024. Main points:
 - Situation at Home Pastures of unauthorised works
 - Wildlife Area. NR and HA to meet on 13 March.
 - Issues with HGVs making turns in the village
 - Pallets covering missing manhole covers on Sawbridgeworth Road
 - Pond Lane signage needs tidying up
 - Planning issues about a porch at Holy Trinity church

23/215 HIGHWAYS MATTERS

To consider any matters relating to Highways

- To report on “Teams” meeting with Cllr Tom Cunningham, Highways Portfolio Holder Essex CC, on 13 February, awaiting the promised written response to issues raised. But overall a positive verbal response, Subjects discussed:
 - Pedestrian crossing by school or a lollypop person
 - Irrational speed limits
 - Non-functional Wig-Wags at school
 - Installation of a mini roundabout
 - Pond Lane crossing
 - Footpath on Sheering Road
 - Replacement of signs -White Horse
- Require notes of the meeting now and a follow up in even weeks.
- SIDs will be installed by SK next week.

23/216 HIGHWAYS AND SPEEDING COMMITTEE

To consider appointments to the Highways and Speeding Advisory Committee. Confirmed as MB, NC, ML, HA, SK & SS

23/217 PARKING MANAGEMENT AND CAR PARKS

To consider matters relating to parking management.

- ANPR analysis project, Clerk to confirm terms of reference.

23/218 PLAYGROUND

To receive a report from the Playground Committee.

- SS and HA met with a potential contractor on 06 March and specified requirements for maintenance and a possible replacement scheme.
- Possibility of funding from London Marathon scheme

23/219 VILLAGE GREEN

To consider any matters relating to the village green

- Tree survey by Lord of the Manor awaited. ML to ask that it be forwarded to the Clerk.
- Extension of Holy Trinity car park has been approved by LoM, quotes can be obtained but council has no funds to enable this.
- Defibrillator registration needed. Clerk to contact Village Hall (Mike Allen) Coop, and doctors' surgery (Peter Elmdon)

23/220 ALLOTMENTS

To consider any matters relating to Allotments

- Discussion of respective responsibilities of Allotment Association and Parish Council.

23/221 STANSTED AIRPORT WATCH

To receive a report on current activities of Stansted Airport Watch.

- AGM on 07 March. HA cannot attend but will report back.

23/222 WILDLIFE AREA

Having agreed a Wildlife Area action plan. Seek quotes . NR and HA to action.

23/224 D-DAY COMMEMORATION

To consider events to be initiated to commemorate the 80th anniversary of the D-Day landings in Normandy.

- Beacon lighting at 21:15 on 06 June has been registered with the Pageantmaster.
- SS getting an action plan together.

23/225 NEIGHBOURHOOD PLAN

To receive a report on the latest meeting of the Steering Committee held on 29 February 2024.

- Questionnaires now being printed & seeking quotes to put the plan together.

23/226 REPORTS FROM MEMBERS ON MEETINGS ATTENDED

To receive and note any additional reports from members

- The Festival Committee had not met since the last meeting.
- HA and ML will attend a Patients Participation meeting when it has been convened.

23/227 AGENDA ITEMS FOR NEXT MEETING

To note items for the agenda of the next meeting.

- Neighbourhood Watch

23/228 DATE OF NEXT MEETINGS

The next meeting of the Council will be on Wednesday 03 April 2024

HHPC Parish Council Forum

Dear all,

Thanks to those who attended our March Forum. We will by the time you have read this followed up on all of your issues at our PC meeting and you will see that reflected in the minutes on the website. Please look at the KTM on the website which should now show the progress on all of the issues in front of us.

Our next forum will be on April 13th, 2024 from 1000 to 1200 in the Institute.

Please join us to discuss your issues more fully.

Nigel Robley
Cllr, HHPC

Update on the Neighbourhood Plan

It had been intended to accompany this month's copy of the Village Magazine with a Questionnaire on the Neighbourhood Plan. Unfortunately we have had a few last minute issues that have prevented us from doing this, but rest assured that we will be ready for next month's edition!

Any questions ? Please contact me at

nigelrobley@yahoo.co.uk.

Nigel Robley

UTTLESFORD DISTRICT COUNCIL GARDEN WASTE SCHEDULE FOR HATFIELD HEATH

7 April 2024	Ardley Crescent
14 April 2024	Broomfields
21 April 2024	Ardley Crescent
28 April 2024	Broomfields
5 May 2024	Ardley Crescent
12 May 2024	Broomfields
19 May 2024	Ardley Crescent
26 May 2024	Broomfields



Hairdressers

KOPELA 01279 731 222
Chestnuts, The Heath, Hatfield Heath,
Bishops Stortford CM22 7EB

Directions: Behind The Nursery On The Heath, Next door to the Fish Inn as you go towards the public car park.

Kopela welcomes you to a fun friendly boutique Hair Salon where you can enjoy and be looked after in confidence.

We use and stock Kerasilk, KMS and Olaplex products and specialise in wella colouring.

We are a Luxury Salon with highly trained and experienced staff. We offer an online booking system to make it easier to book at your convenience via facebook or instagram at Kopelahairstyling or please call Kopela and leave a message where a friendly member of staff will return your call and get you booked in!

Local Handyman & General property maintenance



Decorating, basic carpentry
 Basic Electric & plumbing jobs
 Fencing, fascia boards and soffits
 Guttering, Lawn mowing
 Patios & roofs Jet washing, and many more



No job too small.
 Reliable, domestic service,
 Working surrounding area

Patrick 07860638163



<https://www.facebook.com/HARLOWDIYn/>



Gmail harlowdiy@gmail.com

AERIALS From £119

SATELLITES
From £89

Visual Solutions

T: 01279 730343 M: 07889 413773
www.visual-solutions.org.uk



Traditional Pole and Clearspan Frame
 Marquees for any occasion

www.eclecticmarquees.co.uk

01279 655386

07548 704236

Escape Laser Lounge

**Specialising in Elyson Grade 4 Permanent
 Laser Hair Removal**

**The perfect time to begin your journey towards
 smooth skin and a hair free life!**

- ◆ Elyson diode laser is painless and fast
- ◆ Fantastic results in just 6 treatments
- ◆ Permanently and safely destroys all the hair follicles
- ◆ Treats all areas of the face and body
- ◆ Treats all skin types I to VI
- ◆ Treats all hair colours (excluding white and grey)
- ◆ No more shaving or waxing

**Why wait any longer to be hair free?
 Book now for your free consultation and patch test**

*Escape Laser Lounge | Sue Burgess
 The Shaw, Hatfield Heath*

Contact: 07740-433417 | sburgess.escape@btinternet.com

J&K DOMESTIC CLEANING SERVICE

We provide weekly ,monthly or one-off basis,
 according to your needs ,reasonable rates .
 all surrounding areas



- Trustful
- Sole trader
- Fully insured
- 15years' experience
- Topreferences



Please call Isabela on 07955658347

Jkclean2006@gmail.com



All aspects of tree work and site maintenance carried out

- NPTC Qualified
- 10 Million Public Liability
- Competitive pricing with over 12 years' experience!

- Felling
- Hedge Removal
- Hedge Trimming
- Reductions
- Crown Reduction
- Tree Planting
- Site Clearance
- Stump Removal

FREE QUOTATIONS!

Please contact Ben : 07515 396 182

W: www.walkertreecare.co.uk E: ben@walkertreecare.co.uk

JACKS

GROUNDWORKS

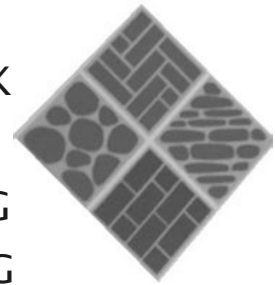
**DIGGER AND OPERATOR
FOR HIRE**

- Excavations • Driveways
- Foundations • Footings
- Drainage • Soakaways
- Septic Tanks

**07940 231964
01279 755545**

ANDREW SANFORD BRICKWORK

- BRICKWORK
- REPAIRS
- REPOINTING
- SLAB LAYING
- CONCRETEWORK
- BASE LAYING
- PATIOS
- FENCE WORK



**ALL GENERAL BUILDING
WORK UNDERTAKEN**

**01279 833046 • 07974 842126
andrewsanford1969@gmail.com**

Polite, friendly service with over 35 years experience

Dear Readers

Please ensure that any items for the magazine are submitted by 14th of the month for the next publication.

Thank you!



Heath Computers For all your IT needs

Whether you run a business, or are a home user, Heath Computers has an IT solution to suit your requirements.

- IT Solutions for home/office
- Domain Registration and Web Design
- Mac/PC Support, Repairs and Upgrades
- Smart Phone/Tablet configuration and setup
- Network Installation - Fixed and Wireless
- Internet - Email - Broadband
- Virus Protection and Spyware removal



Web: www.heathcomputers.co.uk
Email: info@heathcomputers.co.uk

Office: 01279 912345
Mobile: 07958 482889



Ivy Corner Counselling

Hello,

I am a local qualified counsellor currently with some availability for online and face to face therapy. My practice is grounded in, a person-centred and integrative approach, recognising that you are unique and the expert in your own life story. I work with clients with a wide variety of issues or concerns such as anxiety, depression, bereavement, loss, self-esteem, gender and relationship issues and many more or with some who just want the time and a safe, confidential space to be listened to and explore their thoughts and feelings. I am passionate about helping people make more sense of their personal experiences of life - with the aim that this will move them towards a better emotional well-being.



Contact Claire to learn more and explore possibilities...

Website: www.ivycornercounselling.com

email: ivycornercounselling@gmail.com

Tel: 07935 099700

GARDENER

**QUALIFIED EXPERIENCED
RELIABLE**

25 YEARS IN TRADE

Grass Cutting, Hedge Trimming,



Planting,



One off Tidy Up:

Regularly Weekly Maintenance

Jet Wash



Patio Cleaning



Email: deanm41@aol.com

Mobile 07956 524 586

Home Tel 01279 830 960

HEATH HAY AND STRAW

Traditional small bales, free local delivery on orders of 50 bales or more. Evening & weekend deliveries usually possible.

Tel 07976801062

Michael Hockley, Friars Farm, Hatfield Heath

www.heathhayandstraw.co.uk

CHIROPODIST

Mrs. Julie Golden

HPCP Registered
(State Registered)

Home Visiting Practice

Est. 1994

01279 873492

07916 075451

CCTV
From £595




ALARMS
From £495

T: 01279 730343 M: 07889 413773
www.securecom.org.uk

SECURECOM
Chestnut Drive Hatfield Heath



De-rigueur is a family run clinic. We specialise in non surgical aesthetics and have over 35 years experience within beauty.

Book in for your
FREE
no obligation
consultation

Treatments we offer:

- Wart/Skin Tag removal
- Anti wrinkle treatment
- Laser Hair removal
- Acne/Scarring
- Thread/Spider vein removal
- Semi-Permanent Brows
- Facials
- Skin rejuvenation



Contact us:

Mobile number: **07833 300255**
Telephone: **01279 730791**



ENVIRON.
stockist



ROSEWELL
Windows & Doors Ltd

Mark: 07734 885582 Liam: 07790 482450
rosewellwindows28@gmail.com

CERTASS

- Replacement Windows**
- Glass Cutting Service**
- Patio/ Bi-fold Doors**
- Double Glazing Repairs**
- Coloured Splashbacks**
- Roof Lanterns**
- & Conservatories**
- Traditional Putty Glazing Specialists**
- Secondary Glazing**
- Fascias/ Soffits**
- Glass Processing**
- Double Glazed Units**
- Mirrors**



Essex Tree Masters

- Felling/Crown Lifting
- Size Reduction/Thinning
- Dead Wooding
- Stump Grinding
- Pollarding
- Pruning
- Hedge Trimming/Removal

Phone: **07772 151268** or **01245 231642**

Email: info@essextreemasters.co.uk

Website: essextreemasters.co.uk

Checkatrade.com
Where reputation matters



Afternoon Cabaret

£30 per person for live entertainment and 2 course meal with tea / coffee

Wednesday 24th April - ABBA Afternoon

Wednesday 22nd May

Thursday 6th June - D-Day Afternoon

Wednesday 26th June- ABBA Afternoon

Wednesday 24th July

Wednesday 25th September- ABBA Afternoon

Wednesday 23rd October

Wednesday 27th November

Hunters Meet

RESTAURANT.
Monday - Friday
Breakfast
7am-9am

Brunch
9am-2pm

Lunch
12-2pm

Snacks & drinks
2-5.30pm

Evening meals
p.30

Friday and Saturdays
Live entertainment
evenings £40 per person

Sunday Lunch
12-3pm

HUNTERS MEET BEAUTY LODGE

April Offers 2024

Total Bliss & Afternoon Tea

Now £140 Per Person

Full Body Hot Stone Massage,

Luxury Facial & Full Body

Exfoliation

Two's Company with

Afternoon Tea

£160 for Two

The price includes 2 treatments from the following list for both of you:

Half Body Swedish Massage,

Half Body Hot Stones

Massage, Express Facial,

Hopi Ear Candles

All spa days include full use of leisure centre and robe hire.

CALL US ON 01279 730549 FOR ANY FURTHER INFORMATION OR VISIT OUR WEBSITE WWW.HUNTERSMEET.CO.UK

J. Day and Son Family Memorial Mason

Computer drawings

50 free letters on new memorials
with this advert

Bespoke designing available

All types of renovation
and memorial work
undertaken

www.jdayandson.co.uk
info@jdayandson.co.uk

01279 654555



Keeping your wheels in motion

- FAMILY BUSINESS ESTABLISHED OVER 50 YEARS
- LOCAL INDEPENDENT GARAGE
- SERVICE & REPAIRS TO ALL MAKES & MODELS OLD & NEW
- COURTESY CARS AVAILABLE
- DIAGNOSTIC SERVICE
- AIR CONDITIONING
- CAR BODY WORK
- ALL GARAGE SERVICES UNDERTAKEN

• Wendycot" Chelmsford Road,
Hatfield Heath,
Bishop's Stortford, Herts

Opening Hours
Mon - Fri 8am - 5.30pm
Sat 9am - 1pm

Tel: 01279 730 274

John@jewhitemotors.co.uk
www.jewhitemotors.co.uk

J
E
W
H
I
T
E
M
O
T
O
R
S

Luxury Toilet Hire (UK) Ltd



Whatever your special occasion, let Luxury Toilet Hire (UK) Ltd provide you with the perfect toilet facility to make your occasion a memorable success.



Your local service provider for all liquid waste removal, including Cesspools, Septic Tanks, Klargesters and Bio Discs

Tel: 01279 504638 or 01371 873003
Email: info@luxurytoilethire.co.uk

Approved Chimney Sweep

ALEX GLYNNS NACS No.95/352
Vacuum, Rods, Brushes,
Clean & Efficient

12 Orchard Croft, Harlow, Essex CM20 3BA
Tel: 01279424983
Email: alexglynnns2426@gmail.com

((BOUNCE))™


Mini trampoline fitness welcoming all ages and abilities. FUN, FRIENDLY & FIERCE
All classes child friendly


- Tuesday ((BOUNCE)) BLAST 6 - 6:45pm
- Sunday ((BOUNCE)) 09:00 - 10:00am
- Hatfield Heath Village Hall CM22 7EA

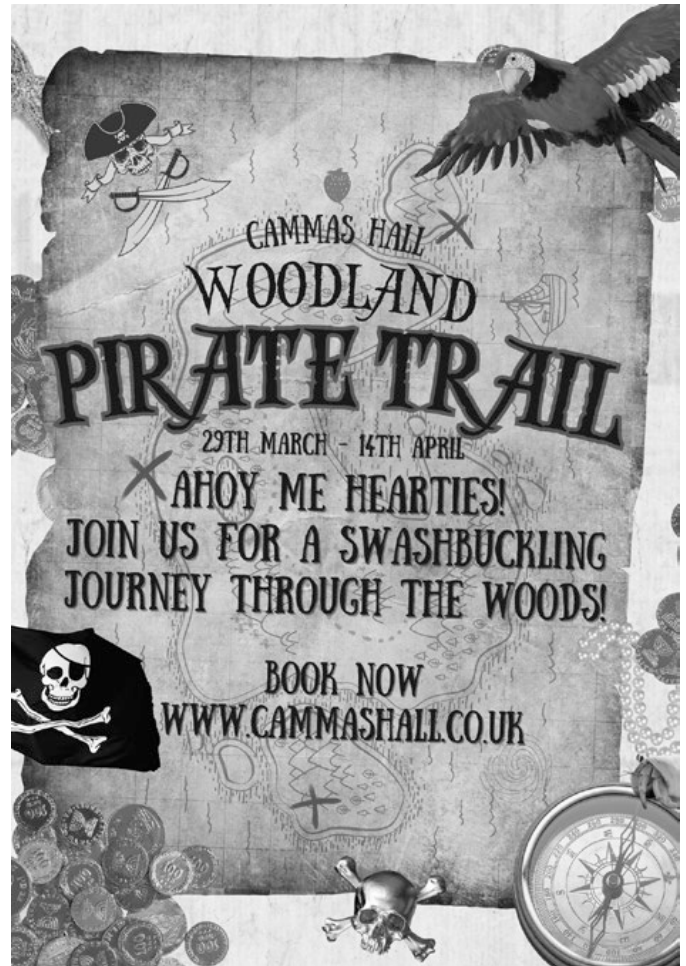
Booking essential at
www.bookwhen.com/bouncehatfieldheath

07926564327

Follow us at

 Bounce Hatfield Heath

 [bouncehatfieldheath](https://www.instagram.com/bouncehatfieldheath)



Pace Electric Gates



Specialists in design, manufacture and installation of manual and automated gates. Gate Servicing.
Including video intercom entry systems.

Staircases, balustrades, balconies and railings. Builders Steelwork.

Laser House, The Fairway, Harlow, Essex, CM18 6LY

Tel: 01279 635525 email: sales@pacesheetmetal.co.uk

Head Over Heels

HAIR AND BEAUTY SALON

HAIR

- Gents Cut/Styling/Colouring
- Ladies Cut/Styling/Colouring
- Bridal
- Hair Up
- Bouncy Blow-dry
- Perms

AESTHETIC

- Sunekos
- Profhilo
- Microblading
- Semi Permanent Make-up
- Microneedling

BEAUTY

- Gel Nails
- Manicure & Pedicure
- Waxing
- Eyebrow & Lash Tinting
- Facials
- Spray Tans
- Lashes
- Lvl Lashes
- Ear piercing

CALL NOW
TO BOOK YOUR
APPOINTMENT

 01279 731762
07533880666

 The Stag
Hatfield Heath



**ZOE PURDY'S
PERSONAL TRAINING STUDIO**

STRENGTH AND CONDITIONING CLASS

POWER

with **PURDY**

TUESDAYS AT 7PM
WEDNESDAY'S AT
9AM AND 6.30PM

LIMITED AVAILABILITY - EMAIL ME TO BOOK!

CONTACT ME FOR PERSONAL TRAINING AND CLASSES:

Fully equipped private personal training studio in the Little Hallingbury countryside.

One-to-one personal training slots and classes available.

Perfect for those who need help reaching
their fitness goals but don't want to enter a busy gym.

ZOEPURDYPT@GMAIL.COM
07519470275

zoepurdypt.co.uk

@ZPTHEPT

CARS WANTED PETROL OR DIESEL



CASH PAID

WITH OR WITHOUT MOT
CARS, ESTATE CARS, 4X4S,
TRUCKS, VANS

CAMPERS WANTED

Darren 01376 326163

ED  **FLAT & PITCHED
ROOFING
SPECIALISTS**

BASED IN HENHAM

07469 091001

www.edroofing.co.uk

Inner Health

FOOD INTOLERANCE TESTING

TERESA POWELL

Tel: 07961 544534

Email: teresapowelluk@yahoo.co.uk

~ Safe & non invasive ~



**BROAD OAK
CONSULTANTS**
I.T. SUPPORT AND SERVICES

01279

718596

Networks & IT Support Repairs & Virus Removal
Computer Systems

Microsoft Partner
Silver Small and Midmarket Cloud Solutions



www.broadoak.net

sales@broadoak.net

PLANS

Planning and Building Regulations Applications



EXTENSIONS CONVERSIONS NEW BUILDINGS

07774 281115 or 01279 731770

plan.services@me.com



THERE'S SO MUCH MORE
**IN YOUR LOCAL
COUNTRY STORE**

**POP IN AND CHECK OUT OUR
CLOTHING DEPARTMENT**



FYFIELD
Fyfield, Ongar CM5 0NS
Tel: 01277 899464

DON'T FORGET YOUR GAS!
We sell all size cylinders

**YOUR LOCAL
CALOR GAS SUPPLIER**

 **ernestDOEpower**
where you can buy with confidence

KINGS REMOVALS



HOUSEHOLD
& OFFICE

www.kingsremovals.co.uk

01279 882 822

For over 30 years we have been carrying out local, national and overseas relocations for personal and business clients. We understand that everyone's move is different and that is why we tailor our service to each individual customers needs.

Kings Removals was set up as and still runs as a family business today. Great emphasis is put on customer satisfaction and this is why a high percentage of our work comes from recommendations and repeat business.



www.kingsremovals.co.uk



Wood Flooring Specialist
Quality Garden Furniture



Wood flooring, worktops, supply, fitting and renovation



Garden Furniture



Decking

andrewbanks.co.uk - 01279 626389

Daniel Robinson & Sons

Independent Family
Funeral Directors
& Monumental Masons

*A personal, caring service, from a family
business day or night.*

*Our fully trained staff will be pleased to
give free confidential advice on any matter.*

SAWBRIDGEWORTH (01279) 722476

BISHOP'S STORTFORD (01279) 655477

HARLOW (01279) 426990

GREAT DUNMOW (01371) 874518

www.drobinson.co.uk

Golden Charter
Funeral Plans

BLOSSOM & BELLS

Bespoke Florist

Flowers for all occasions

LOCAL DELIVERIES

07943 198440

blossombells

blossomandbells

blossomandbells@hotmail.com

www.blossomandbellsflorist.co.uk

The Chestnuts, The Heath, Hatfield Heath CM22 7FA

PRESSUREWORX

Exterior Cleaning

15% Off

QUOTE HEATH

Residential

Commercial

Agricultural

WWW.PRESSUREWORXLTD.COM



Roof Cleaning - Moss Removal - Driveway & Patio Cleaning - Gutter Clearance - Soffit & Fascia Cleaning - Render Cleaning - Graffiti Removal - Facilities Management

Pressureworx Ltd have decades worth of experience in the exterior cleaning industry across South East England. Undertaking work for a range of domestic, commercial & agricultural clients we guarantee quality.

office@pressureworxLtd.com

01279 703100



COUNTRYSIDE DRIVEWAYS

YOUR LOCAL DRIVEWAY COMPANY



START OF THE SEASON
£20
per sq mtr

HOT TAR CHIP SALE

FREE SITE SURVEY

CAN BE APPLIED TO OLD TARMAC SURFACES

HARDCORE, ROAD PLANNINGS, CONCRETE, GRAVEL

BY FAR THE MOST HARDWEARING & COST EFFECTIVE SURFACE

WE ALSO DO BLOCK PAVING & TARMAC DRIVEWAYS

01787 860045 OR 07393 989560

FREE ESTIMATES

Hatfield Haven Dementia Care Home Hatfield Heath - A HOME FOR LIFE



At Hatfield Haven we offer a 24-bedroom home that specialises in dementia care. We cater for individual needs to get the best out of our residents and make their last home a happy home.

We achieve a sensitive approach by spending time with our residents, and those closest to them, gaining an understanding of their medical and wellbeing needs, their likes, and dislikes and how their dementia currently affects them which, in turn, enables our loving team members to deliver the very best care.

For further information on room vacancies please call on 01279 730043 or email: sarah@hatfieldhaven-dementiacarehome.co.uk www.hatfieldhaven-dementiacarehome.co.uk

All Things Spiritual

FROM SPIRIT...THROUGH SPIRIT...TO SPIRIT

Unit 14a Pond Lane
Hatfield Heath
CM22 7AB

Monday 9.30 - 5.00

Tuesday 9.30 - 5.00

Wednesday 9.30 - 2.30

Thursday 9.30 - 5.00

Friday 9.30 - 2.30

Alternate Saturday's 10.00 - 2.00

Also Evenings by appointment only

07383 603799

1-2-1 Readings

Tarot/Psychic Readings

Crystals

Tarot Cards

Incense

Healing Centre

Reiki Massage

Chakra Balancing

Chakra Facial (with light therapy)

Spiritual counselling

Soul to soul reconnect

Plus so much more

THE FITNESS
BUTLER

START
TODAY
NOT TOMORROW

- ✓ Private Gym Space
- ✓ 1-2-1 Sessions
- ✓ Partner/Group Sessions
- ✓ Boxercise Classes
- ✓ Diet Plans
- ✓ Tailored Gym Plans



Jack Butler

- ▲ Level 4 Nutritional Sciences
- ▲ Level 3 Qualified Personal Trainer
- ▲ Level 2 Fitness Instructing & Boxercise
- ▲ Level 2 Instructing Physical Activity
- ▲ For Children

**CONTACT ME
FOR MORE INFO:**

07766963956

jackbutler23@yahoo.com

@thefitnessbutler

The Fitness Butler

Based in Hatfield Heath

THINKING OF A NEW KITCHEN OR BATHROOM?



We offer a
Complete Service
DESIGN
CERAMIC TILING
LIGHTING
WOODWORK ETC.

All carried out with the minimum
of fuss and mess by experts!

Also all Plumbing &

Domestic Heating Installations

SO LOOK NO FURTHER THAN

C.F OAKES



Established in Harlow for over 45 years
19 SERVICE BAY, WYCH ELM, HARLOW

Tel: 01279 421 182 or 01279 730 282

Mobile: 07836 736 202

CARPET, WOOD, KARNDEAN

Supplied and installed.

Samples brought to you.

Best for less but
quality given for your budget.

Uplift dispose old.

30 years experience

Steve 07939739845

Carpets2u@icloud.com

HEATING & GAS ENGINEER



Kamco
POWER FLUSHING

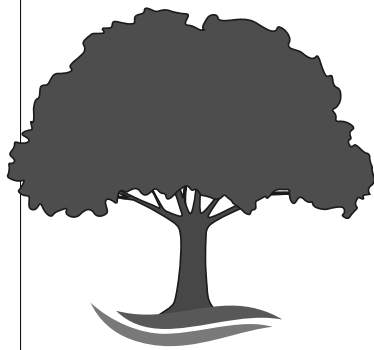


- **Plumbing Maintenance & Repairs**
- **Boiler Breakdowns & Installations**
- **Hot Water Cylinders**
- **Annual Boiler Service**
- **Gas Safety Inspections**

FIND OUR REVIEWS Yell & Google 5 Star Rating



EST. 1999
AJA PLUMBING SERVICES
OFFICE
0800 328 9499
MOBILE
07989 861633
www.ajaplumbing.co.uk
24 SERVICE



ALLGARDENASPECTS.CO.UK

All Garden
Aspects

01279 755545

07940 231964

TREE SURGERY • STUMP REMOVAL
HEDGE CUTTING • FENCING

INFO@ALLGARDENASPECTS.CO.UK



novuscare

**Care in the Heart
of your Own Home**

If you are looking for extra care and support for a loved one in Essex then our local carers can help.

Novus Care is regulated by the Care Quality Commission and can provide a qualified, experienced carer to support your loved one in the comfort of their own home from just 30 mins per week to full-time live in care.

For more information or to arrange a free assessment, please contact the Novus Care Team on:
T: 01268 960286 | E: hello@novus-care.com | W: novus-care.com

LOCAL GARDENER

Moved back to area, reinstating round. Honest, reliable, hardworking, flexible and friendly.

One-offs or regular visits.

Simon: 07833 670539

simongriffin18@gmail.com



YOUR LOCAL PROPERTY FINANCE EXPERT.

We can help with all types of specialist property finance including:

- Buy to Let Mortgages
- Commercial Investment Mortgages
- Finance for trading premises
- Holiday Lets
- Refurbishment & Development Finance

To make an enquiry call 07764807803 or visit our website at www.dovecotepropertyfinance.co.uk

Dovecote Property Finance Ltd is an appointed representative of The On-Line Partnership Limited which is authorised and regulated by the Financial Conduct Authority (FCA). The FCA does not regulate some investment mortgages.



LADY LOCKSMITH

Member of
Checkatrade.com
DBS checked

Call Keeley For a Free Quote Or Friendly Advice On..

01279 739 156 07736 929 440

10 Chesnut Drive, Hatfield Heath, CM22 7ER

- *Emergency Door Opening
- *Insurance Upgrades to BS3621
- *Upvc Locks Specialist
- *Whether Broken, Repaired, or Replaced.
- *All Locks Supplied & Fitted
- *All Lockwork Undertaken,
- *Doors, Windows, garages, Sheds.
- *Est over 10yrs, Fully Insured
- *Oap Discounts

PHIL SNELL



General Building & Maintenance
Conversions, Bathrooms, Kitchens
Plastering, Brickwork, Decorating

Call for Free Advice & Estimates
01279 739 136 or 07900 694 664
FULLY INSURED

SPS INTERIORS

BASED IN HATFIELD BROAD OAK FOR OVER 15 YEARS

- FITTED FURNITURE
- JOINERY
- KITCHENS & BATHROOMS
- DECORATING
- MAINTENANCE
- BUILDING WORKS



- FREE ESTIMATES
- QUALIFIED TRADES
- LOCAL PRODUCTION
- COMPLETE SERVICE
- TIMELINE MANAGEMENT
- DOMESTIC & COMMERCIAL

WE'RE LOCAL, SO JUST GIVE US A CALL !

CALL 01279 717900
EMAIL INFO@SPSINTERIORS.CO.UK
WWW.SPSINTERIORS.CO.UK

SPS INTERIORS
UNIT 6B, HATFIELD REGIS GRANGE
HATFIELD BROAD OAK
CM22 7JZ

MUSIC STAGE!

HATFIELD HEATH = FESTIVAL =

The time has come for the event of the year!

Hunters Meet are organising all your music for you again this year, and what a line up we have for you! From supporting our local youth groups, to rock classics and finishing with ibiza sundown mix with DJ we have something for everybody to enjoy.

This year we would like to involve even more of our community, so we will be doing an open mic session to open the festival, We would like anyone willing to join us and share their talent.

To be involved please call Sapphire and Brendan on 01279 730549 to find out more information and book your slot.

SUNDAY 23RD JUNE

Entertainment arranged by Hunters Meet

Pictured Below:

After all the heavy rain the ponds on Dunmow Road filled up and one poor sign found itself in deeper water than expected. 'Nobody told me it could be this deep!'

Sent in by Quentin Spear

Pictured Right:

Weeping Willow on a sunny afternoon at the Shaw.

Sent in by Susan Harthill.



We love to receive photographs relating to Hatfield Heath and the local surrounding areas for publication on the back page. Please keep them coming in with your name and a caption to: hatfieldheathmag@yahoo.co.uk